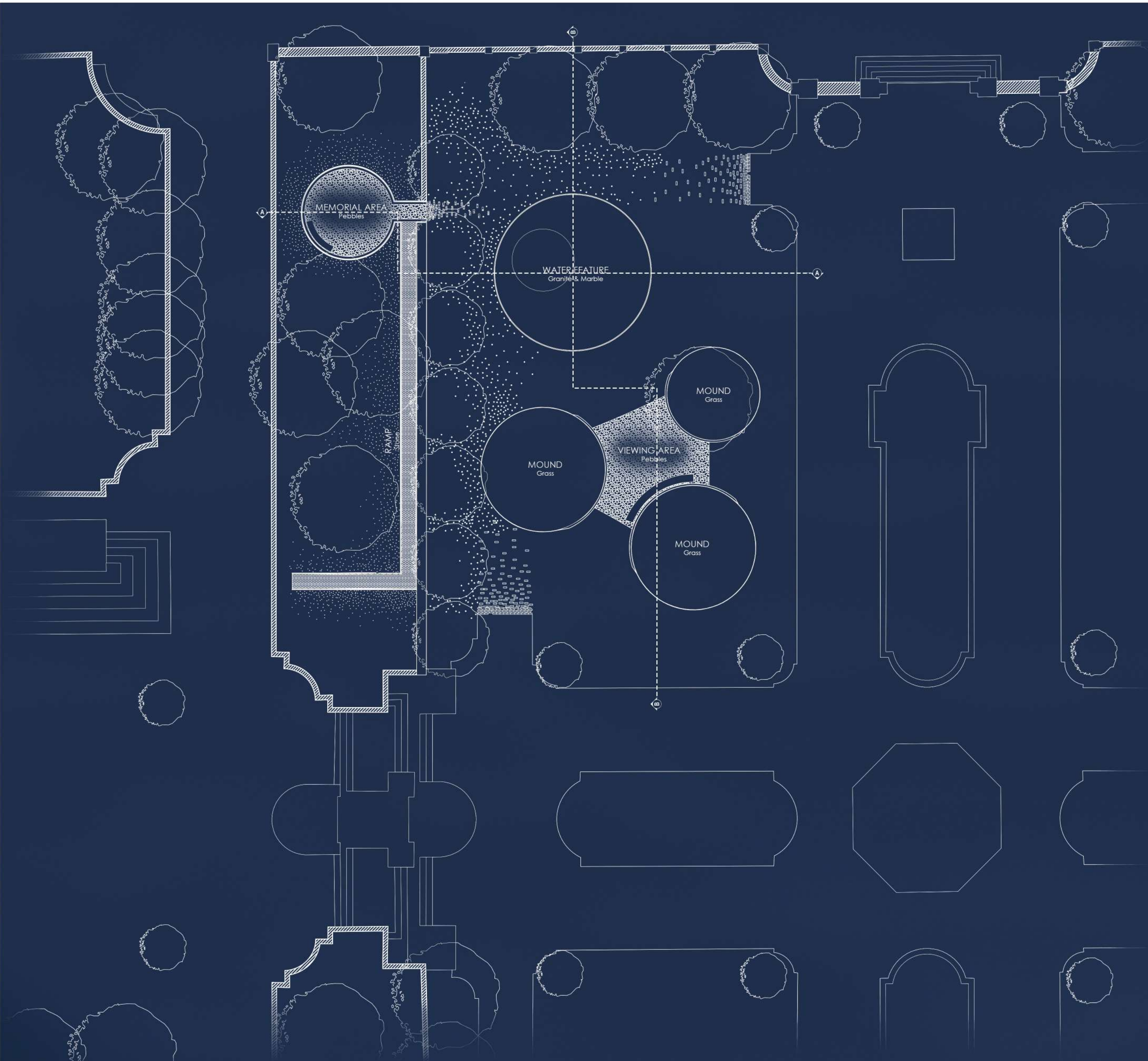


# COMMONWEALTH WAR GRAVE MEMORIAL: THE COMPANY'S GARDEN, CAPE TOWN

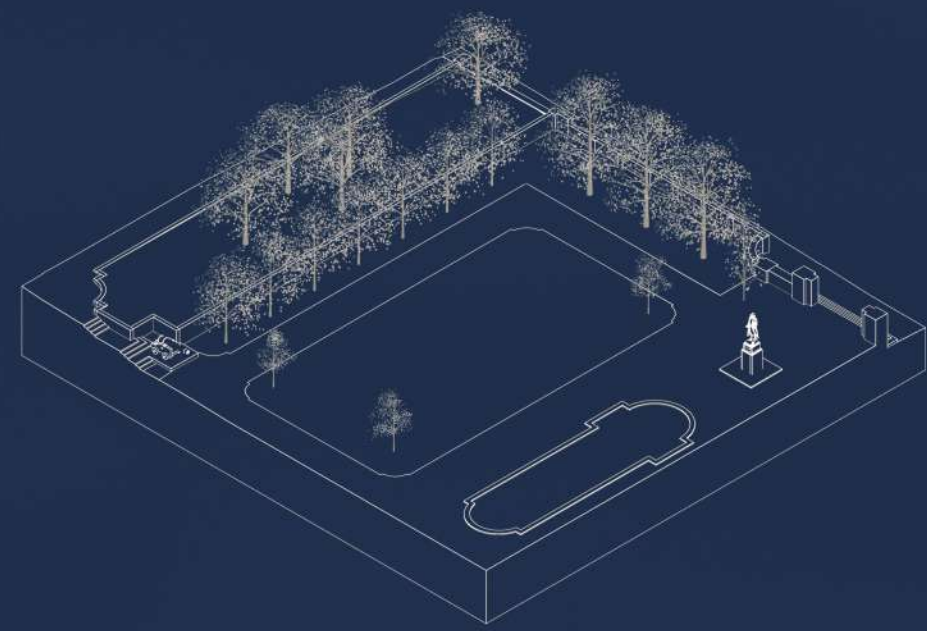


COMMONWEALTH  
WAR GRAVES



SITE PLAN 1:200

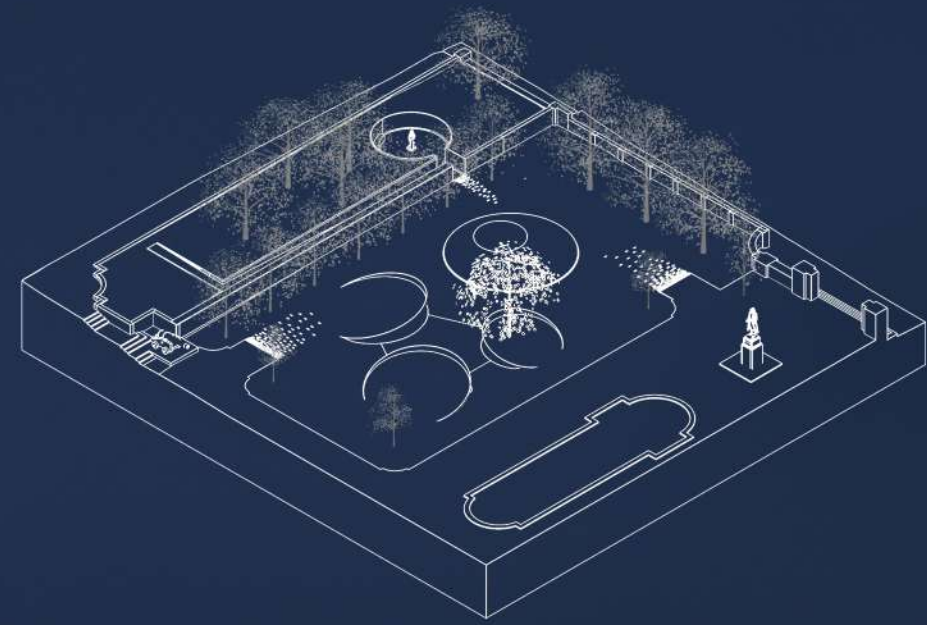
A seemingly eternal silence is broken by the individual willing to speak out. Speaking out for all the unknown and fallen heroes whose burden was carried in darkness, this memorial illuminates their sacrifice, giving a voice back to the silent voices. Although many were lost at land and sea, this memorial represents a unified final resting place and commemoration of their lives and the ones they left behind.



Existing Site



Sea of Contemplation & Remembrance Garden



Raised Mounds represent the unmarked graves of the fallen soldiers.



Steel Pipes represent the silent voices that can now speak.

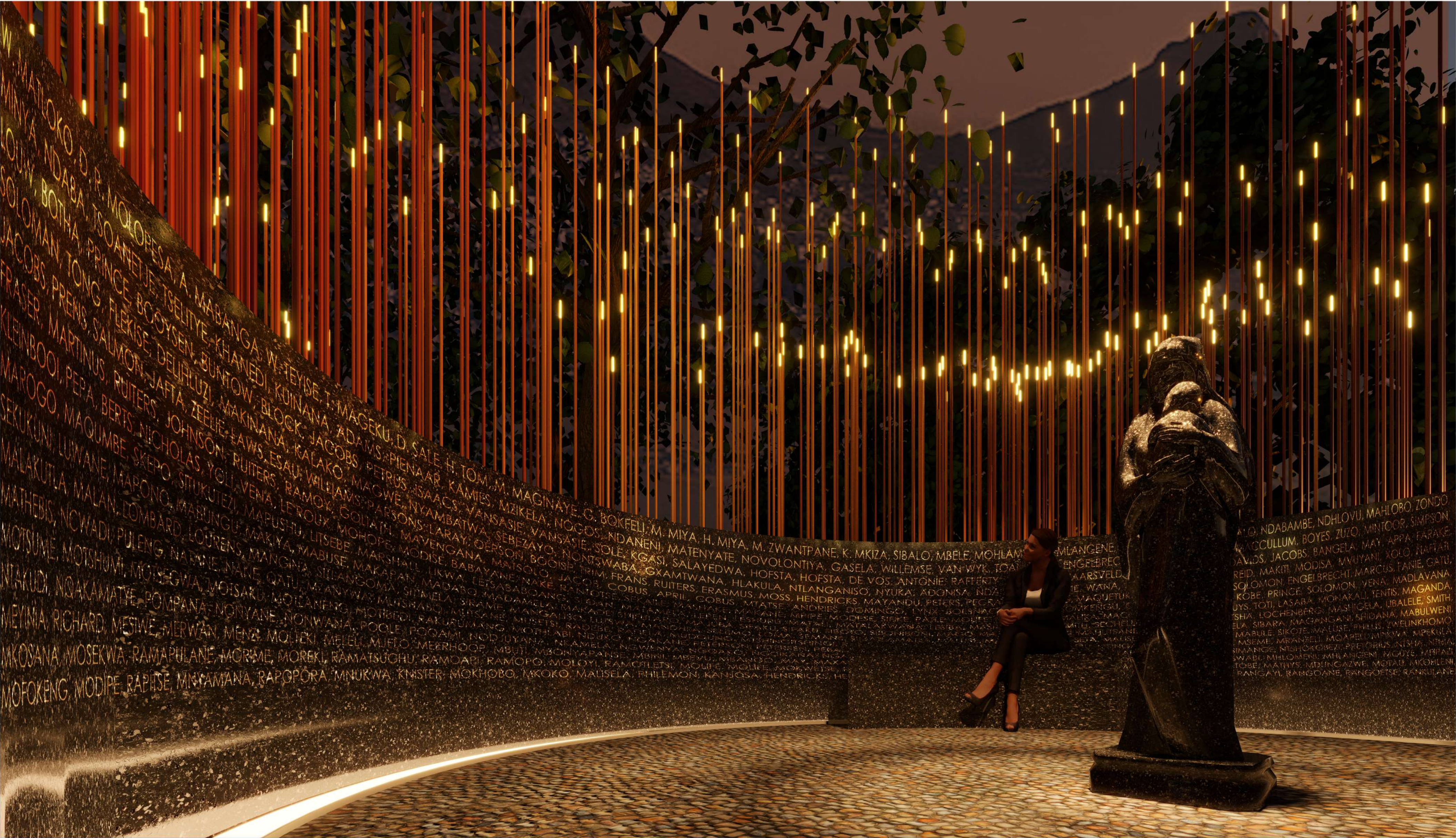




# COMMONWEALTH WAR GRAVE MEMORIAL: THE COMPANY'S GARDEN, CAPE TOWN

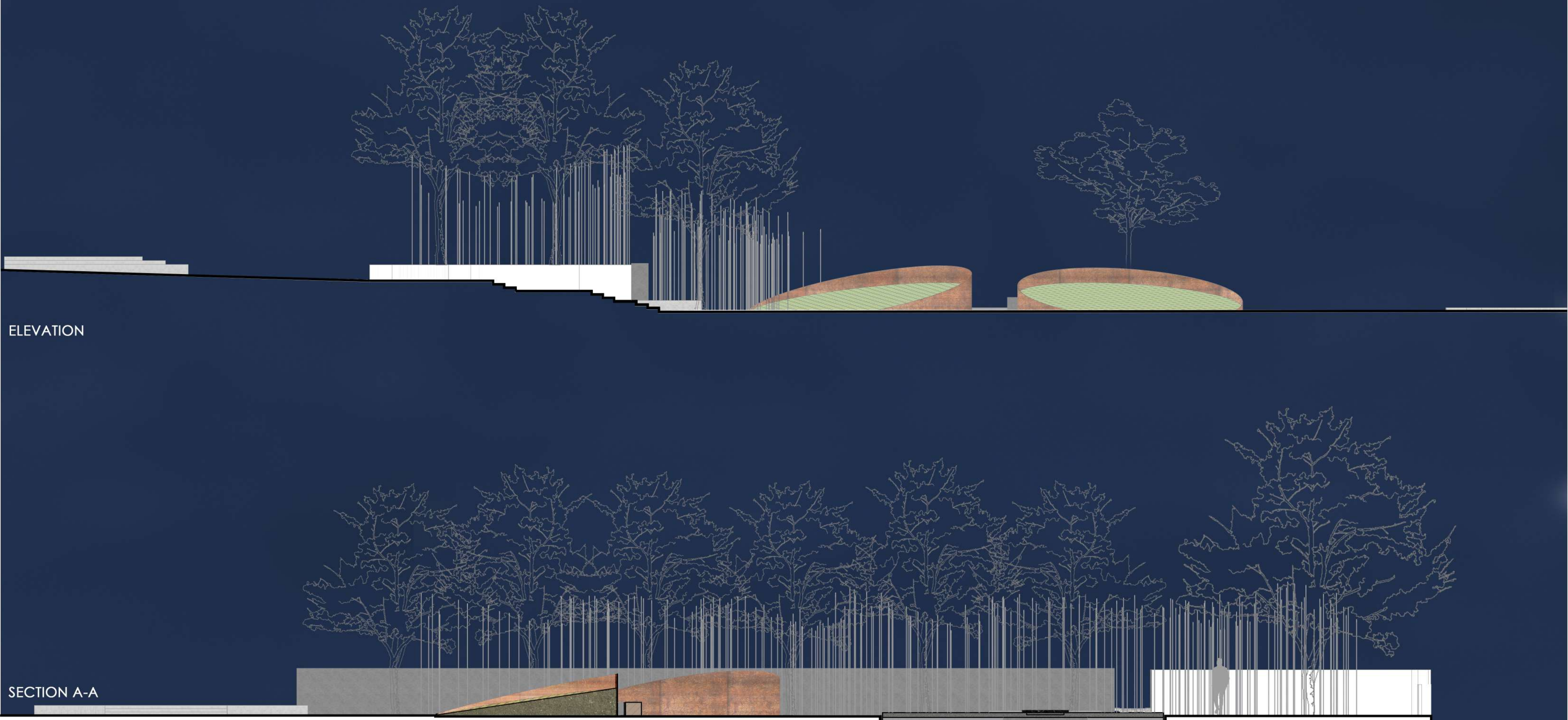


COMMONWEALTH  
WAR GRAVES



The sculpture in the Remembrance Garden – **the woman in waiting** – represents the fallen soldier's loved ones waiting on their return, the return that has not happened for over 100 years – but now they have arrived at their final resting place.

Showcasing the work of local artists, the Remembrance Garden also commemorates the fallen whose names have been identified and provides a space for future names that may be discovered.





# COMMONWEALTH WAR GRAVE MEMORIAL: THE COMPANY'S GARDEN, CAPE TOWN



COMMONWEALTH  
WAR GRAVES

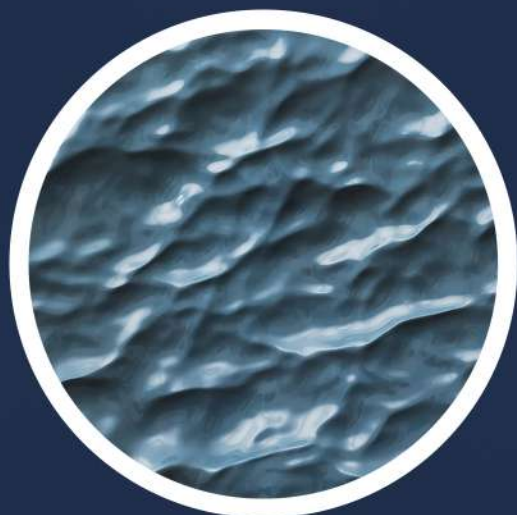
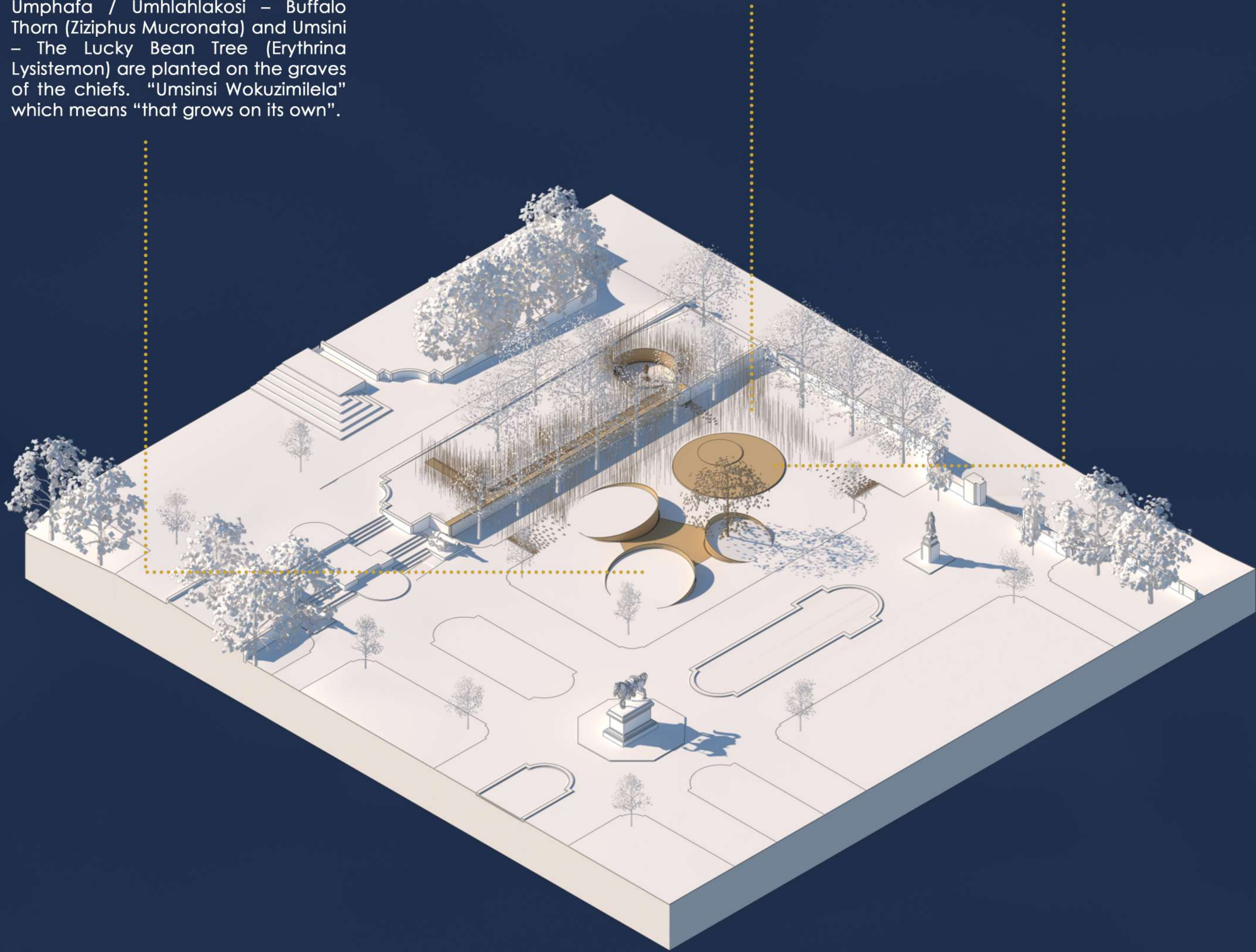


The raised mounds represent the unmarked graves of the fallen soldiers. The visitor has an opportunity to engage with fallen ones. The mounds also serve as public space for sitting on the lawn.

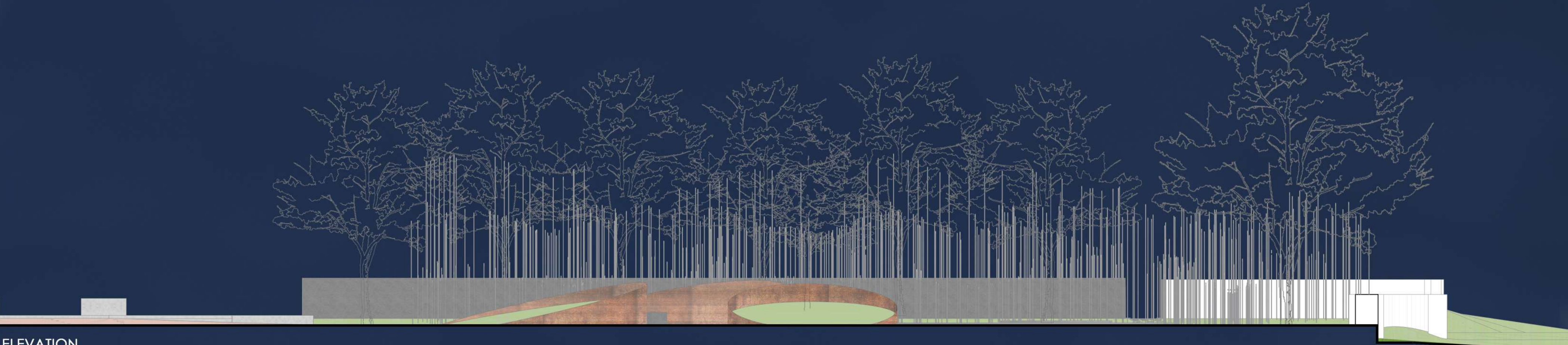
Similarly in Zulu and Swazi culture a Umphafa / Umhlahlakosi – Buffalo Thorn (*Ziziphus Mucronata*) and Umsini – The Lucky Bean Tree (*Erythrina Lysistemon*) are planted on the graves of the chiefs. “Umsinsi Wokuzimilela” which means “that grows on its own”.

The steel pipes are the silent voices that can now speak – if the wind blows, their voices will be heard again – 2 500 pipes...2 500 voices speaking about their past. At night, the pipes will light up, and now the silent ones that was left behind can now being seen.

The sea of contemplation – the water feature represents the many soldiers that died on the ocean – the granite surface of the water feature is contoured to represent the turbulent waves of the ocean.



MATERIAL PALETTE



ELEVATION



SECTION B-B